

Anova

Installation document
Pro Version 4.0.8

Table of Contents

I. Server Requirements.....	3
II. Anova Pro 4.0.8 Installation Instructions.....	4
III. Anova Pro 4.0.7 users.....	7
IV. Anova Pro users with earlier versions (older than Anova Pro 4.0.7).....	8
V. Give permissions for the files & folders.....	8
VI. Initial Server Settings.....	9
VII. Initial Database Setting.....	10
VIII. Encoder Installation.....	11
IX. Program Settings.....	12
X. Cron settings.....	13
XI. Mail Alerts.....	15
XII. Steps to create application ID and secret key for yahoo.....	15
XIII. Steps to register your domain for google contact imports.....	18
IVX. Anova Pro version.....	19
VX. Methods to get support.....	19
XVI. Recommended web hosts.....	20

Welcome to the Anova Pro 4.0.8 release!

I. Server Requirements

The requirements to run Anova Pro 4.0.8 are as follows:

- PHP IonCube Loader.
- Linux Server (some old distributions are not supported)
- Apache Web Server
- MySQL (version 4.1.2 or higher)
- Freetype
- Jpeg
- CURL
- mhash
- GD Library 2 or higher

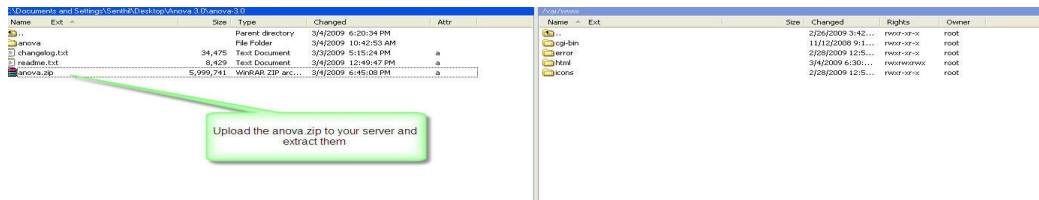
PHP Configuration Settings:

1. safe_mode = off.
2. register_globals = off
3. open_basedir = (no value)
4. output_buffering = on
5. upload_max_filesize = 200M (or more)
6. post_max_size = 200M (or more)
7. max_execution_time = 0
8. magic_gpc_quotes = 0
9. max_input_time = 6000 (or more)
10. memory_limit = 32M (or more)
11. error_reporting = E_ALL & ~E_NOTICE | E_STRICT
12. display_errors = On
13. file_uploads = On
14. session.gc_maxlifetime = 14000 (or more)
15. CURL, GD library and Freetype library modules need to be installed.

II. Anova Pro 4.0.8 Installation Instructions

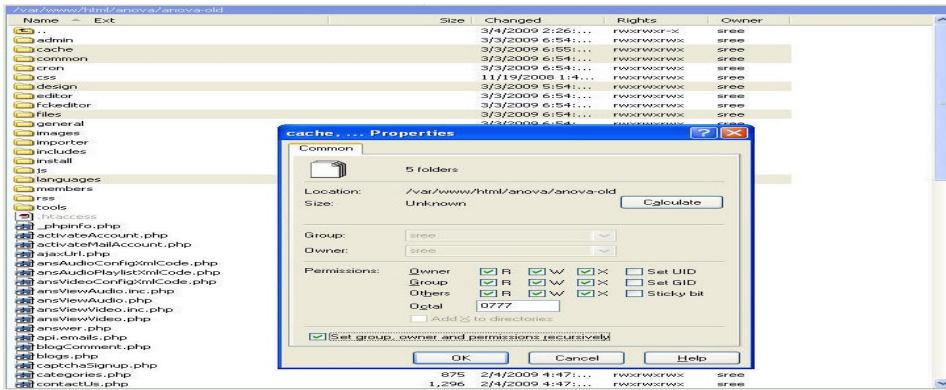
Steps to install Anova Pro:

- Upload the script zip file into the desired location of web server using the FTP (Right click and select Upload option).

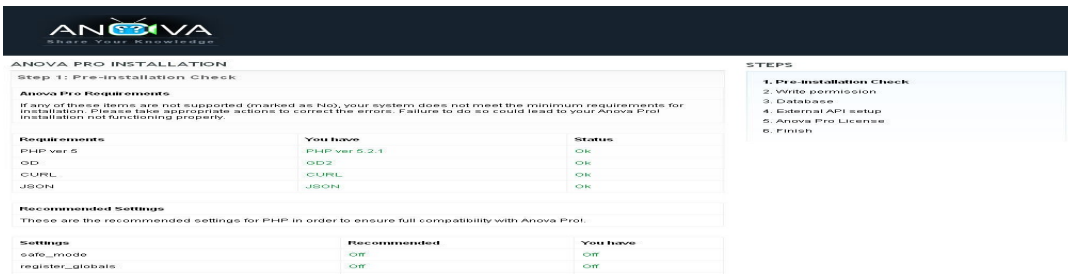


Unzip the file in the webserver.

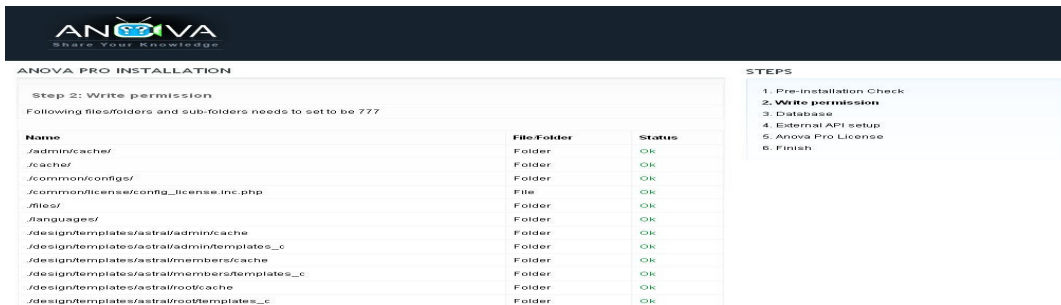
- Give permissions (CHMOD -R 777 folder/) for the following folders:
 - common/configs/
 - common/license/config_license.inc.php
 - admin/cache/
 - cache/
 - design/templates/astrol/admin/templates_c
 - design/templates/astrol/admin/cache
 - design/templates/astrol/members/templates_c
 - design/templates/astrol/members/cache
 - design/templates/astrol/root/templates_c
 - design/templates/astrol/root/cache
 - answers/design/templates/astrol/members/cache
 - answers/design/templates/astrol/members/templates_c
 - answers/design/templates/astrol/root/cache
 - answers/design/templates/astrol/root/templates_c
 - design/templates/astrol/admin/answers/templates_c
 - forums/design/templates/astrol/members/cache
 - forums/design/templates/astrol/members/templates_c
 - forums/design/templates/astrol/root/cache
 - forums/design/templates/astrol/root/templates_c
 - design/templates/astrol/admin/forums/templates_c
 - blog/design/templates/astrol/members/cache
 - blog/design/templates/astrol/members/templates_c
 - blog/design/templates/astrol/root/cache
 - blog/design/templates/astrol/root/templates_c
 - design/templates/astrol/admin/blog/templates_c
 - files/
 - languages/



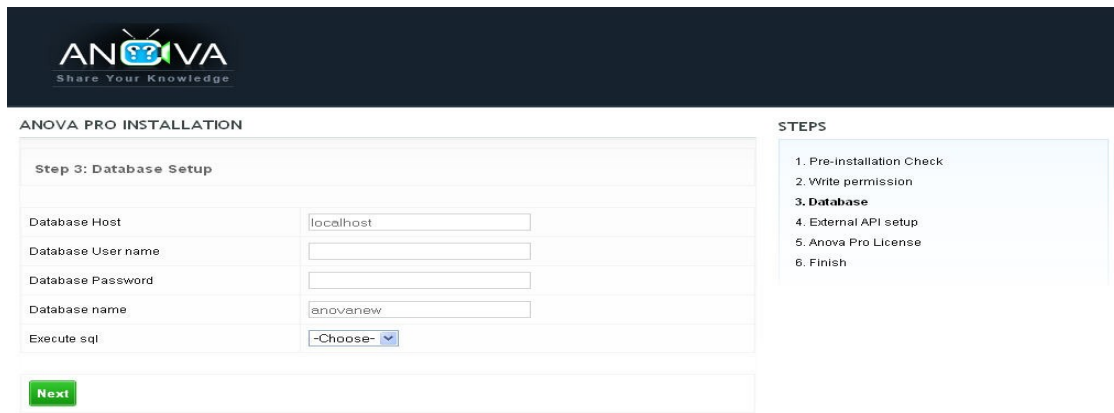
- Type the domain name followed by install.php (e.g. <http://yourdomain.com/install.php>) in the address bar of the browser and run it.



- Click the Next button.



- This screen will display the status of the rights given to the specified files and folders. If permission is not set for any file, the system will display error in the status column. Please give the write permission (CHMOD – R 777 folder/) to the corresponding folders and files and proceed.



ANOVA PRO INSTALLATION

Step 3: Database Setup

Database Host:

Database User name:

Database Password:

Database name:

Execute sql:

STEPS

1. Pre-installation Check
2. Write permission
3. **Database**
4. External API setup
5. Anova Pro License
6. Finish

- Enter the database host (normally localhost), database user name, password and name of the database created for the Anova, select default sql (Yes or No), and click the Next button. If default sql value is 'Yes' means your existing data (if you have) will get deleted and tables with default sql will be installed. If default sql value is 'No' means, your database will not get affected, database details will be stored in config file and you need to execute the sql manually.



ANOVA PRO INSTALLATION

YAHOO CONTACT IMPORT API

To Generate Yahoo API key [click here](#)

yahoo Secret Key:

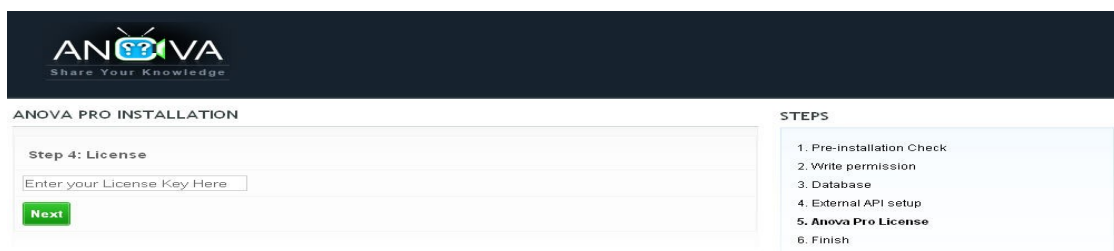
yahoo Consumer Key:

Yahoo Application ID:

STEPS

1. Pre-installation Check
2. Write permission
3. Database
4. **External API setup**
5. Anova Pro License
6. Finish

- If you want to provide the contact import feature to import contact details from Yahoo, provide the secret key and API ID generated for Yahoo and then click the Next button. You can also set the import API later directly in the API configuration file by running <http://yourdomain.com/admin/editApiConfig.php> in your browser.



ANOVA PRO INSTALLATION


Step 4: License

Enter your License Key Here:

STEPS

1. Pre-installation Check
2. Write permission
3. Database
4. External API setup
5. **Anova Pro License**
6. Finish

- Enter the license key you got at the time of purchase.



ANOVA
Share Your Knowledge

ANOVA PRO INSTALLATION

Congratulations! Anova Pro installed successfully!!!

Admin details:

- Username: webmaster
- Password: webmaster


please remember to delete the "install.php" file.

GO TO THE SITE

STEPS


1. Pre-installation Check
2. Write permission
3. Database
4. External API setup
5. Anova Pro License
- 6. Finish**

That's it! Anova Pro 4.0.8 is installed successfully.

	<p>If you have any difficulty in installing Feedy, feel free to contact our support desk http://support.agriya.com and we will help you to install it for a small fee.</p>
---	--

III. Anova Pro 4.0.7 users

The process of upgrading from Anova Pro 4.0.7 to Anova Pro 4.0.8 is not fully automated, so please follow the instructions carefully to gain new features and fix bugs. When you are upgrading from Anova Pro 4.0.7 to Anova Pro 4.0.8 version, the existing files in the Anova Pro 4.0.7 version will be replaced. Also, if you have integrated modules or changed theme, tpl, php files in Anova Pro 4.0.7 version, those files will be affected at the time of upgrading. However database will remain the same.

	<p>Do not start upgrading unless you are sure of what they mean and what they will do. Changes made previously will no longer be effective as a result of upgrading.</p>
---	---

1. Before you start upgrading Anova Pro 4.0.8, kindly take a backup of the folders
 - common/configs/
 - languages (if you made changes to language files)
2. Upload and extract anova_pro_4.0.7_to_anova_pro_4.0.8_upgrade.zip in your Anova Pro directory
3. After extracting files in server:
 - Give permissions (CHMOD -R 777 folder/) for the following folders:
 - answers/cache/
 - admin/answers/cache/
 - answers/files/
 - design/templates/astral/admin/answers/templates_c
 - answers/design/templates/astral/members/cache
 - answers/design/templates/astral/members/templates_c
 - answers/design/templates/astral/root/cache

- answers/design/templates/astral/root/templates_c
- Move all files from **/anova/files/ans_photos/** folder to **/files/ans_photos/** folder
- Move all files from **/anova/files/** folder to **/answers/files/** folder
- Change configuration settings. Open admin panel (<http://yourdomain.com/admin/editConfig.php>) and set the site configurations which include main settings, module settings and other settings related to the site.

Now you have upgraded to Anova Pro 4.0.8 version.

IV. Anova Pro users with earlier versions (older than Anova Pro 4.0.7)

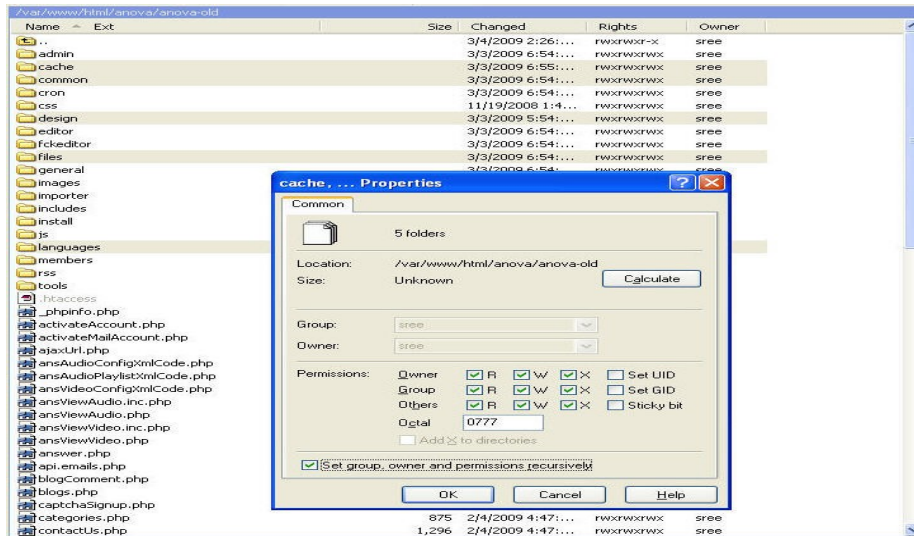
Upgrade to Anova Pro 4.0.7 and then follow the "Anova Pro 4.0.7 users" procedure.

V. Give permissions for the files & folders

1. Give read, write and execute rights to the following file and folders of the Anova Script.

- common/configs/
- common/license/
- admin/cache/
- cache/
- design/templates/astral/admin/templates_c
- design/templates/astral/admin/cache
- design/templates/astral/members/templates_c
- design/templates/astral/members/cache
- design/templates/astral/root/templates_c
- design/templates/astral/root/cache
- answers/design/templates/astral/members/cache
- answers/design/templates/astral/members/templates_c
- answersanswers/design/templates/astral/root/cache
- answersanswers/design/templates/astral/root/templates_c
- design/templates/astral/admin/answersanswers/templates_c
- forums/design/templates/astral/members/cache
- forums/design/templates/astral/members/templates_c
- forums/design/templates/astral/root/cache
- forums/design/templates/astral/root/templates_c
- design/templates/astral/admin/forums/templates_c
- blog/design/templates/astral/members/cache
- blog/design/templates/astral/members/templates_c
- blog/design/templates/astral/root/cache

- blog/design/templates/astral/root/templates_c
 - design/templates/astral/admin/blog/templates_c
 - files/
 - languages/
2. In order to set the rights, right click after placing the cursor on the file/folder and then select file attributes from the drop down menu.



3. Enter 777 in the Numeric Value field highlighted in the above picture, and click Ok.

Or

Select the Read, Write and Execute check boxes provided in the Owner, Group and Other permission sections, and click OK.

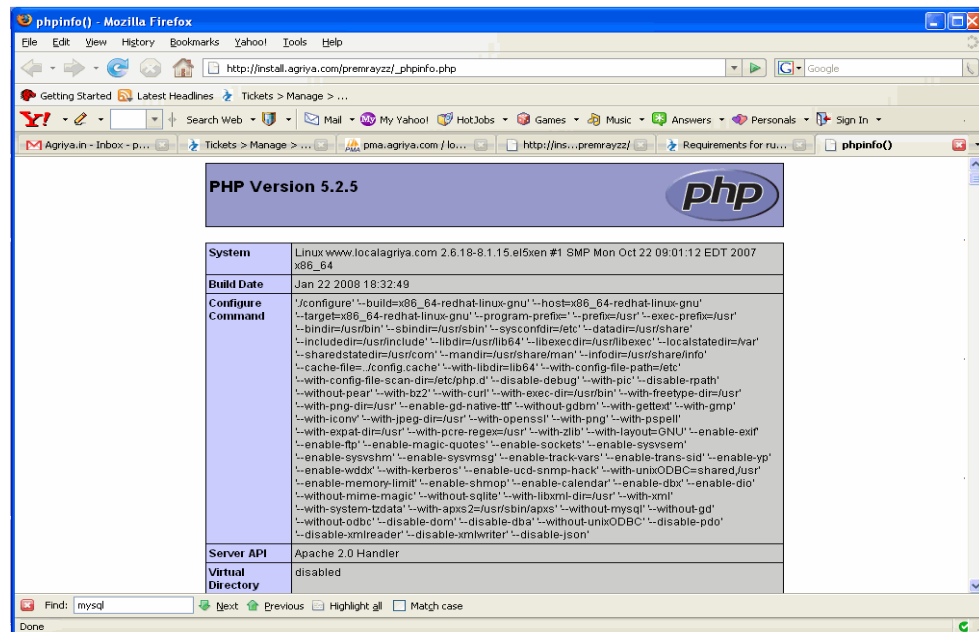
You can also set the permission in command prompt, by executing the command “**chmod -R 777 folders/files**”.

VI. Initial Server Settings

Make sure that the following settings are available in your server, by following the simple steps listed below:

1. Take _phpinfo.php file from Anova script and load it in your server using FTP.
2. Key in the domain name followed by the _phpinfo.php in the address bar of the browser (Ex: www.yourdomainname.com/_phpinfo.php) and press enter key.

The information regarding the PHP and server in your system will appear as shown below:



Please check whether your system meets the following settings, if not please update it and proceed.

1. CURL support must be "enabled" (Compulsory)
2. Multibyte Support must be "enabled" (Compulsory)
3. safe_mode must be "Off" (Compulsory)
4. MHASH support must be Enabled (Compulsory)
5. allow_url_fopen must be "On" (Recommended)
- open_basedir must be "no value" (Recommended)

VII. Initial Database Setting

The database settings can be performed manually.

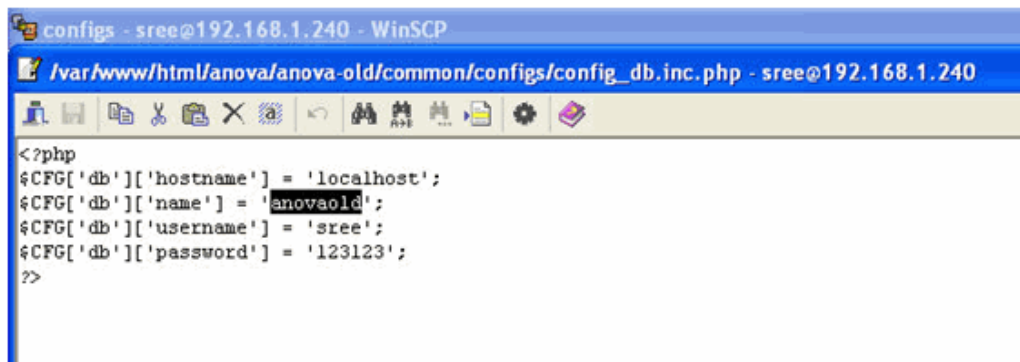
Create a database in your server and edit the database settings in the db file.

Steps for database creation in SQL:

1. Open the Control Panel.
2. Double click on the MySQL.
3. Enter the database name in New Database field and click the Create Database button.
4. Create a username with password, and assign him all the privileges for accessing the database created for the Anova.

Steps to update database setting in the db file:

1. Open the database file in the path common/configs/config_db.inc.php.

A screenshot of a WinSCP window. The title bar reads 'configs - sree@192.168.1.240 - WinSCP'. The address bar shows the file path '/var/www/html/anova/anova-old/common/configs/config_db.inc.php - sree@192.168.1.240'. Below the address bar is a toolbar with various icons. The main text area contains the following PHP code:

```
<?php
$CFG['db']['hostname'] = 'localhost';
$CFG['db']['name'] = 'anovaold';
$CFG['db']['username'] = 'sree';
$CFG['db']['password'] = '123123';
?>
```

1. Set `$CFG['db']['hostname']` to the hostname (normally localhost)
2. Set `$CFG['db']['name']` to the database name
3. Set `$CFG['db']['username']` to the username of the Anova database
4. Set `$CFG['db']['password']` to the password of the Anova database

Run the SQL file 'install/sql/anova.sql' in your MySQL, and grant the "CREATE VIEW" privilege to the database user in your MySQL.

VIII. Encoder Installation

For video/audio support you need to install red5, mplayer and flvtool2.

Note: Red5, mplayer and flvtool2 are not mandatory for Anova, but for recording videos and audios online through webcam you have to install them. Without Red5, mplayer, flvtool2 you can post text questions and answers.

Please use the following links, to download red5, mplayer and flvtool2.

To download mplayer: <http://www.mplayerhq.hu/MPlayer/releases/codecs/all-20061022.tar.bz2>

Or

<http://www1.mplayerhq.hu/MPlayer/releases/MPlayer-1.0pre8.tar.bz2>


To download flvtool: http://rubyforge.org/frs/download.php/9225/flvtool2_1.0.5_rc6.tgz



To download red5: <http://osflash.org/red5/070final>

After installing the red5, mplayer and flvtool2 you need to specify the path in

<http://yourdomain.com/admin/editConfig.php?>

[config_folder=anova&config_file_name=config_encoder](http://yourdomain.com/admin/editConfig.php?config_folder=anova&config_file_name=config_encoder). Just open the Encoder settings in the Admin panel, and specify the path in the respective fields as shown below:



 Welcome **webmaster**
 Back to Member

Settings
Answers
Members
Video Player
Forums
Blogs
Banners
Avatars
Latest News
Report Bugs
General
Statistics
Languages
Logout

Manage Your Site Configurations

- Main
- General
- Home Page
- Module
- Features
- Answers
- Rewards
- Encoder
- Forums
- Blogs
- Users

Encoder Settings

Editing configuration variables - semicolon(;) restricted


Encoder settings	
Mplayer Path	<input type="text" value="/usr/bin/mplayer"/>
Flvtool2 Path	<input type="text" value="/usr/local/bin/flvtool2"/>
Red5 Server Path	<input type="text" value="rtmp://192.168.1.85/SOSample"/>
Red5 Flv Stored Path	<input type="text" value="/opt/red5/webapps/SOSample/streams/"/>
Webcam Capture Time Limit	<input type="text" value="60"/>
<input type="button" value="Update"/> <input type="button" value="Reset"/>	



For example

Mplayer Path	/usr/bin/mplayer Note: mplayer installed path
Flvtool2 Path	/usr/bin/flvtool2 Note: flvtool2 installed path
Red5 Server Path	rtmp://domain_ip_address/SOSample Note: replace domain_ip_address with your server IP address
Red5 Flv Stored Path	/opt/red5/webapps/SOSample/streams/ Note: path to store the captured video/audio files temporarily

IX. Program Settings

To configure the way the script works, edit the configuration file found in the path `common/config.inc.php`. Please be careful while editing the configuration file or simply run <http://yourdomain.com/admin/editConfig.php> in your browser (the system will ask for user name and password, provide the admin login details), a settings screen appears as shown below:



 Welcome **webmaster**
 Back to Member

Settings
Answers
Members
Video Player
Forums
Blogs
Banners
Avatars
Latest News
Report Bugs
General
Statistics
Languages
Logout

Manage Your Site Configurations

- Main
- General
- Home Page
- Module
- Features
- Answers
- Rewards
- Encoder
- Forums
- Blogs
- Users
- Sidebar
- Edit Meta Details
- Edit Email Templates

Main Settings

Editing configuration variables - semicolon(;) restricted

Site Details	
Your site name	<input type="text" value="Anova"/>
Your site title	<input type="text" value="Anova"/>
Admin e-mail information	
Webmaster e-mail	<input type="text"/>
Support e-mail	<input type="text" value="anovadev@gmail.com"/>
Site no-reply name for e-mail	<input type="text" value="Anova Team"/>
Site no-reply e-mail	<input type="text" value="anovadev@gmail.com"/>
HTML information	
HTML meta keywords	<input type="text" value="Anova, Answers Over Video and Audio, Yahoo Answers, Wiki"/>
HTML meta description	<input type="text" value="Anova - Answers Over Video and Audio. Anova is the first and"/>
<input type="button" value="Update"/> <input type="button" value="Reset"/>	

Provide the values in the respective fields, to configure site accordingly and click the edit button. This will update your configuration file.

X. Cron settings

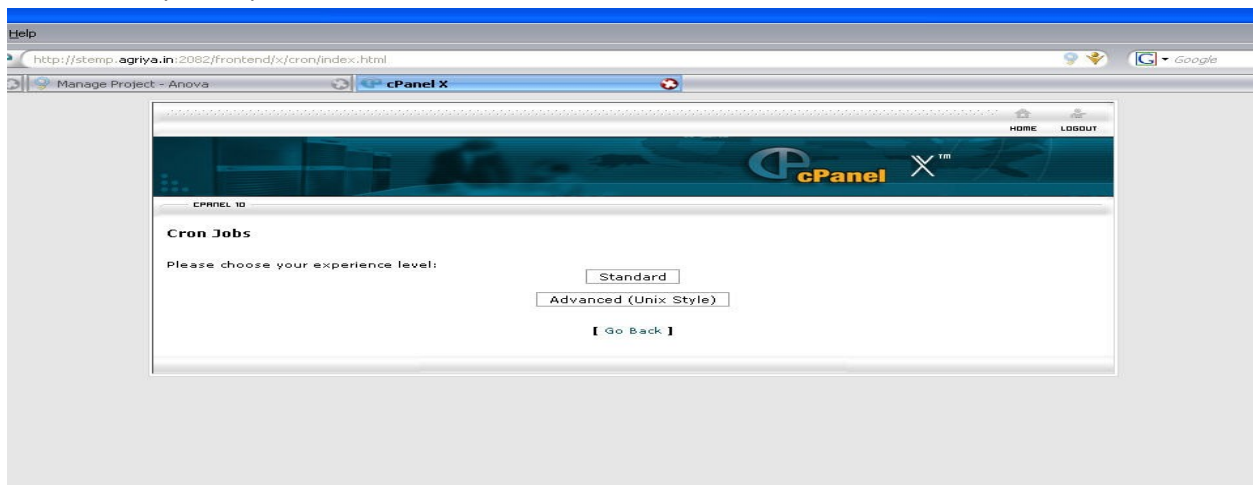
You need to set the duration for running the crons. Files needs to be added in the cron tab are available in the folder cron. The cron settings can be performed in the control panel (cpanel) or directly in the command prompt.

Cron settings in the control panel (cpanel)

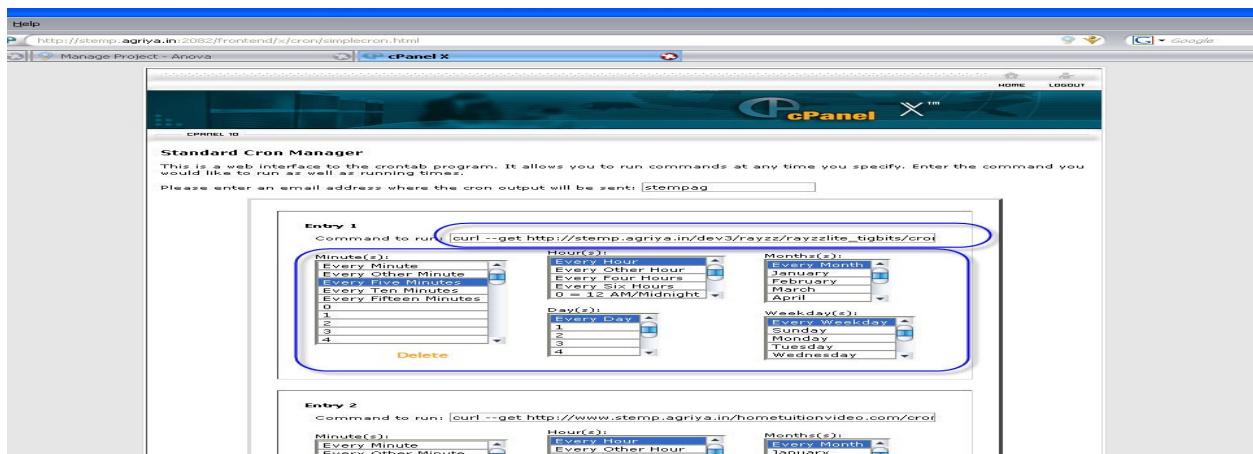
Get access to the cron page by clicking the Cron Jobs in the control panel.



Next choose your experience level.



The cron manager comes into view:



Run the cron files in the 'command to run' field (e.g. `curl --get http://yourdomain.com/cron/ansAudioDeleteCron.php`), and set the duration for running the cron.

Cron setting in command prompt

Provide the following link in the command prompt, to perform time settings for actions like auto delete, video delete etc. The number at the start of the command specifies the duration.

```
59 */2 * * * curl --get http://yourdomain.com/cron/ansAudioDeleteCron.php > /dev/null
59 */2 * * * curl --get http://yourdomain.com/cron/ansVideoDeleteCron.php > /dev/null
59 */2 * * * curl --get http://yourdomain.com/cron/ansCaptureFileDeleteCron.php > /dev/null
59 23 * * * curl --get http://yourdomain.com/cron/deleteMessage.php > /dev/null
*/10 * * * * curl --get http://yourdomain.com/cron/favoriteReply.php > /dev/null
*/10 * * * * curl --get http://yourdomain.com/cron/forumReminder.php > /dev/null
*/10 * * * * curl --get http://yourdomain.com/cron/questionReminder.php > /dev/null
*/10 * * * * curl --get http://yourdomain.com/cron/questionResolvedReminder.php > /dev/null
*/10 * * * * curl --get http://yourdomain.com/cron/newsLetterCron.php > /dev/null
59 23 * * * curl --get http://yourdomain.com/cron/removeInactiveUsers.php > /dev/null
```

Note: Please replace the yourdomain.com to your full URL where the script is installed.

The recommended duration for each action is given below:

- `ansAudioDeleteCron.php` (recommended duration: 2 hours)
- `ansCaptureFileDeleteCron.php` (recommended duration: 2 hours)
- `ansVideoDeleteCron.php` (recommended duration: 2 hours)
- `deleteMessage.php` (recommended duration: 24 hours)
- `favoriteReply.php` (recommended duration: 10 Minutes)
- `forumReminder.php` (recommended duration: 10 Minutes)
- `questionReminder.php` (recommended duration: 10 Minutes)
- `questionResolvedReminder.php` (recommended duration: 10 Minutes)
- `newsLetterCron.php` (recommended duration: 10 Minutes)
- `removeInactiveUsers.php` (recommended duration: 24 Hours)

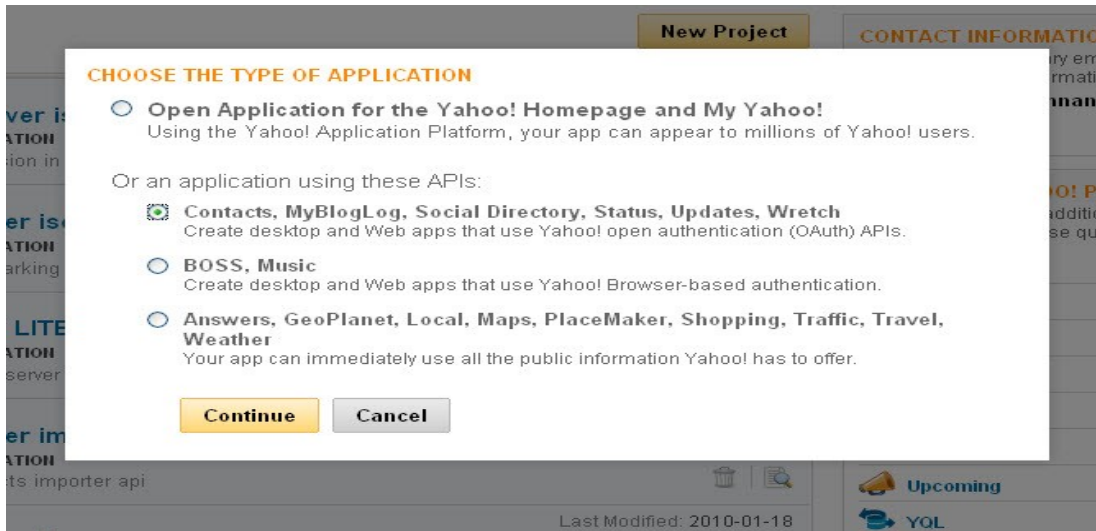
XI. Mail Alerts

You will receive email alerts during the following actions:

- Sign Up
- Password request (Forgot password)
- When changing email
- Question sharing
- Forums topic Sharing
- When question abused
- When answer abused
- When answer selected as best
- Internal mail alert
- When answer posted in favorite question
- When question added with subscribed tags
- Newsletters
- When question, answer, blog, blog comment, forum, forum topic and forum response get published.
- When question is resolved.

XII. Steps to create application ID and secret key for yahoo

- Login to your yahoo account on <https://developer.apps.yahoo.com/projects>
- Click on 'New Project' Button in the page. A pop-up window will open as shown below.



In that select the option button 'Contact, MyBlog. Social Directory, Status, Updates, Wretch' and click 'continue'.

- Application registration page will be shown as below.

So, you want to use some Yahoo! APIs...

We need some information from you... To use Yahoo! Web Services, we need some information about you and the application you're understanding of how Yahoo! Web Services are being used and to protect the security and privacy of Yahoo! users. All questions are req



About your application

Application Name:

Kind of Application: ☒ Web-based ☐ Desktop ☐ Mobile

Description:

Application URL:

Favicon URL:

Optional; specify a URL to a 16x16 JPG, PNG or GIF image.

Security & Privacy

Yahoo! APIs use the OAuth protocol for secure validation of API usage and end-user authentication, if needed.

Application Domain:

Access Scopes: ☒ This app will only access public APIs, Web Services, or RSS feeds. ☐ This app requires access to private user data.

Terms of Use: ☐ I have read and agree to the Yahoo! Developer Network Terms of Use.

- In the displayed form, fill the details about your application, its description and select the 'kind of application' as 'Web-based'.
- Enter the 'application URL' as the Anova installed path in your server and the optional field 'Favicon URL' as the favicon path in your server.
- Enter the 'application domain' as the domain name of your installed application.
- Select the 'access scopes' as 'This app requires access to private user data'. Once this option is selected, list of access scopes will be shown as below.

Security & Privacy

Yahoo! APIs use the OAuth protocol for secure validation of API usage and end-user authentication, if needed.

Application Domain:

Access Scopes: ☐ This app will only access public APIs, Web Services, or RSS feeds. ☒ This app requires access to private user data.

Delicious
This application has read access to all data from the user, including their bookmarks, private bookmarks, subscriptions, inbox, network bookmarks and settings. Furthermore the application can add, edit and delete bookmarks on behalf of the user.

Yahoo! Mail
This API allows your application to list, compose, move, delete and send messages with optional attachments, edit folders, filters, and metadata.

MyBlogLog
Gives your application access to a MyBlogLog account, to edit a MyBlogLog profile and access its statistics. The application will be able to take certain actions on behalf of the user, including sending email to their community, add a user to a community, and add or remove their services.

Meme
This application has read access to all data from the user in Meme, including posts and comments from their dashboard, their own posts, their followers and followed lists and other public info such as name, description and avatar. Furthermore the application can add and delete posts, reposts, comments and followed memes on behalf of the user.

Yahoo! Contacts
This API allows your application to read from and write to a user's Contacts data in Yahoo! Contacts.

Yahoo! Profiles
This API will allow your application access to user data marked as public or restricted to connections only on their Yahoo! Profile including shared connections lists. This does not include the users

- In the listed access scopes, select 'Yahoo! Contacts' as 'Read' as highlighted in the above screen shot.

- Check the check box near '**Terms of Use**' and proceed by clicking '**Get API Key**'.
- If you are registering the application domain for the first time in yahoo, you will be asked to add a file to your domain to check the accessibility.

[MY PROJECTS](#)
[TOOLS & SERVICES](#)
[RESOURCES](#)

We need to verify your domain

To verify that you control the domain where your application will be located, you'll need to create an empty file in the root directory of your domain.

Step 1: Create an Empty Verification File

File Name: j3pH.Qc8WB6V.tGGWChM_A--.html

Step 2: Upload Verification File

Server to Verify: www.test.com

Url to check: http://www.test.com/j3pH.Qc8WB6V.tGGWChM_A--.html

Place the file you created in step 1 at the document root of this server.

[Verify Domain](#)
[Cancel](#)

[Blog](#)
[Forums](#)
[Terms of Use](#)
[Tools and Services](#)

Copyright © 2010 Yahoo! Inc. All rights reserved. [Copyright](#) | [Privacy Policy](#)
 Help us continue to improve the Yahoo! Developer Network: [Send Your Suggestions](#)

- Follow the instructions provided in the page and once the domain is verified , the API key for the application will be created .

Your API Key has been approved!

This API Key allows you to write an application that interacts with OAuth-enabled and public Yahoo! APIs.
 ⓘ This information will always be available in the [MY PROJECTS](#) section

Testing Details

API Key (OAuth consumer key)

dJ0yJmk9WWJ0Z0daVIJKUW1xJmQ9WVdrOVNrRkxjSEptTkRnbWNHbzINVEUzTIRRe

Your API Key is a required parameter when making calls to Yahoo! APIs & web services

Shared Secret

91fe86362c2a10b77b04b98f6bbaa34bdc31844

Your Shared Secret is used to hash a URL and create a unique signature

Application ID

JAKprf48

Your Application ID is unique to your application

Verified Application Domain

devdemo.agriya.in

Your application will be able to make calls to Yahoo! APIs & web services from this domain

Access Scopes

API NAME	DESCRIPTION	PERMISSIONS
Yahoo! Contacts	This API allows your application to view and/or import a user's Contacts data from the Yahoo! Contacts application	Read

Your application will be able to make calls to the following secure Yahoo! APIs & web services using OAuth

- Copy this API key, secret key and application id and add in the respective fields provided in the link <http://yourdomain.com/admin/edirApiConfig.php> for the yahoo import contacts to work.

XIII. Steps to register your domain for google contact imports

1. Go to <https://www.google.com/accounts/ManageDomains>
2. Login with your google account
3. After successful login you will be redirected to "Manage your domains" page.



Manage your domains

Are you a web application developer who needs to register your application with Google? Use this page to identify your web domain(s) and start the registration process. Once you've successfully programmatically access Google data on behalf of your users.

This new, automated registration process has three steps:

1. Verify administrator access to the domain.
2. Accept terms of service. At this point, your domain is active but not yet registered.
3. Set up domain properties and provide authentication certificate.

Add a New Domain

Enter the domain URL you want to register. Note: URL paths are not allowed; for example, "www.example.com" is valid, but "www.example.com/example/" is not.

Manage registration

Click on a domain name to view its activation status, complete registration, or change an active domain's properties.

4. In the "Add a New Domain" section, enter the domain URL you want to register and click "Add domain" button.
5. Your domain name will be listed under "Manage registration" section.

Add a New Domain

Enter the domain URL you want to register. Note: URL paths are not allowed; for example, "www.example.com" is valid, but "www.example.com/example/" is not.

Manage registration

Click on a domain name to view its activation status, complete registration, or change an active domain's properties.

[Manage anova.demo.agriya.com](#)

6. Click your domain name and it takes you to "Verify ownership" page.

Verify ownership

Verification status **Not Verified**

There are several ways to prove to Google that you own <http://anova.demo.agriya.com>. Select the option that is easiest for you.

- ☒ **Add a DNS record to your domain's configuration**
You can use this option if you can sign in to your domain registrar or hosting provider and add a new DNS record.
- ☐ **Add a meta tag to your site's home page**
You can choose this option if you can edit your site's HTML.
- ☐ **Upload an HTML file to your server**
You can choose this option if you can upload new files to your site.
- ☐ **Link to your Google Analytics account**
You can use this option if your site already has a Google Analytics tracking code that uses the asynchronous snippet. You must be an administrator on the Analytics account.

Instructions:

[I don't know who this is](#)

7. Select one of the methods to verify your site ownership and click 'Verify' button.



Manage anova.demo.agriya.com (Inactive)

To register your domain, provide the following information. Once you've registered with an authentication certificate, you will be able to use secure tokens when communicating with a Google service.

Target URL path prefix:

Must be the prefix of the next parameter used in AuthSub.
e.g. <http://example.com/authsub>

Domain description:
(Optional)

Tell us about your domain

We do not have a certificate for your domain.

Upload new X.509 cert:
(Optional)

Browse...

File must be in PEM format. [Learn More](#)

8. In the Manage Domain page, enter "Target URL path prefix:" like <http://yourdomain.com/answers/api.emails.php> and click 'Save' button
9. Now you can see OAuth Consumer Key and OAuth Consumer Secret. Also you can see status as 'Active'



Manage anova.demo.agriya.com (Active)

To register your domain, provide the following information. Once you've registered with an authentication certificate, you will be able to use secure tokens when communicating with a Google service.

Target URL path prefix:

Must be the prefix of the next parameter used in AuthSub.
e.g. <http://example.com/authsub>

Domain description:
(Optional)

Tell us about your domain

OAuth Consumer Key:

anova.demo.agriya.com

OAuth Consumer Secret:

/C4Fbs1xsHNuU9Kl6em97ot

We do not have a certificate for your domain.

Upload new X.509 cert:
(Optional)

Browse...

File must be in PEM format. [Learn More](#)

Test your AuthSub registration [here](#).

That's it. You have successfully registered your domain. Users can now import contacts from Google.

IVX. Anova Pro version

Please make sure to check and download the latest version of the software if available, frequently.

In case, if you are stuck at any point and need help in installation, please don't hesitate to [contact us](#), we would be very happy to assist you.

VX. Methods to get support

Live chat & Support ticket: <http://support.agriya.com/>

Contact Email: anova@agriya.in

XVI. Recommended web hosts

Agriya has teamed up with a number of Web Hosts that are able to support our products. [Click here for recommended web hosting](#)